



**Garden Hours**

365 days a year  
 Weekdays  
 8am-4:30pm  
 Weekends & Holidays  
 10am-5pm

**Information** available at the Helen Crocker Russell Library of Horticulture and the Garden Bookstore, open daily 10am-4pm, closed major holidays catalog of plants, and Bed Map available in the Library.

415.661.1316  
 www.sfbotanicalgarden.org

**Daily Docent-led Tours (free)**

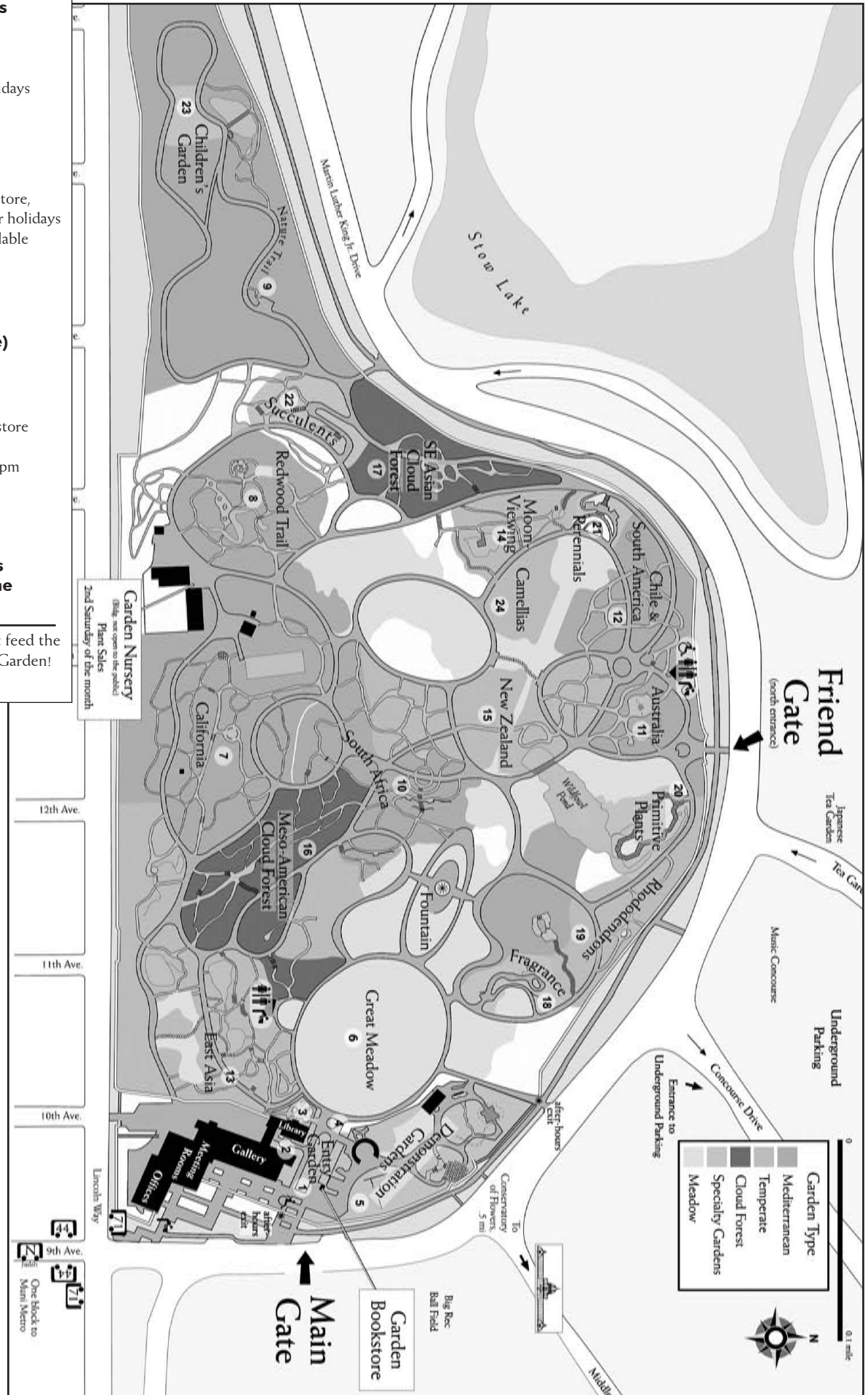
Groups of 10 or more call  
 415.661.1316 ext. 412  
 to reserve special-focus tours.

- Departing from the Garden Bookstore  
 Mon-Fri: 1:30pm  
 Weekends: 10:30am & 1:30pm
- Departing from Friend Gate  
 (north entrance)  
 Wed, Fri, & Sun: 2pm

**A full-color map brochure is available for purchase at the Garden Bookstore.**



Please remember, we don't feed the wild animals in the Garden!



Map created by Darin Jensen and the Interns of the Cartography Lab, UC Berkeley. Updated by Kristen Larned, 2005. With updates by Anne Anderson, Anderson Communications, 2007.